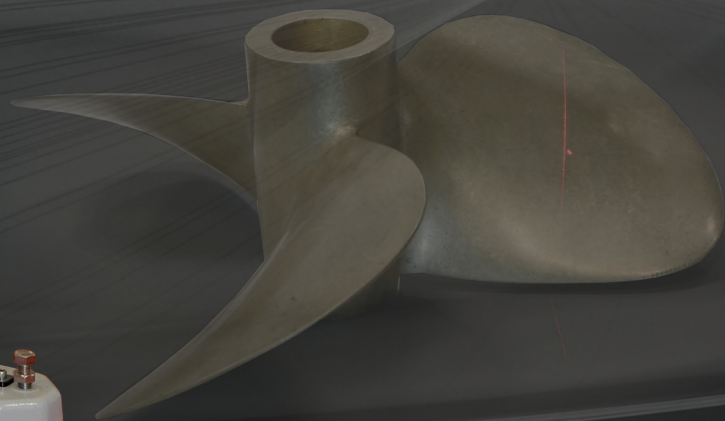
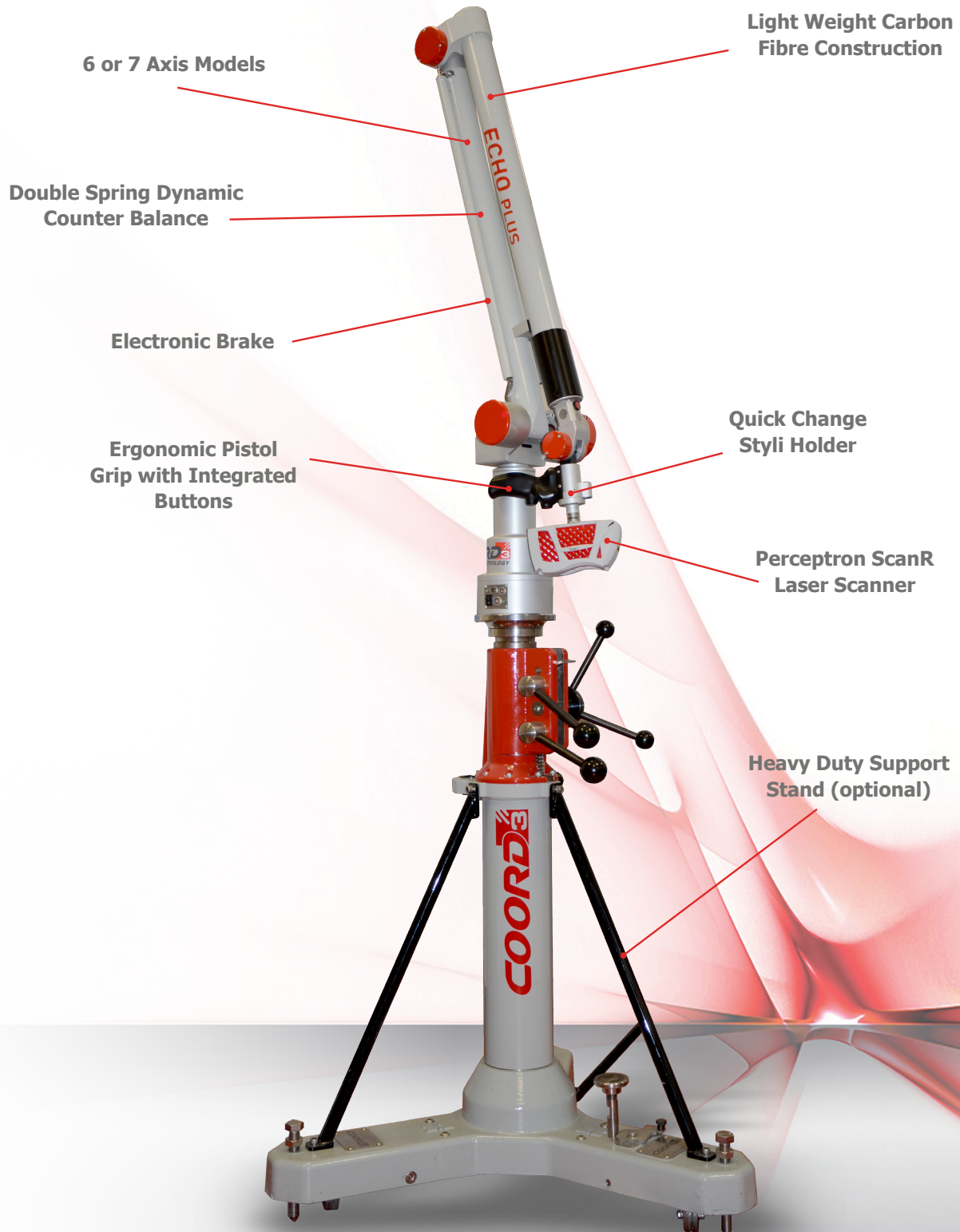




COORD³

ECHO Portable Arm CMM





ECHO Portable Articulated Arm CMM

Metrology to Go...

COORD3 ECHO Portable Articulated Arm CMM is ideal for quick and accurate inspection of manufactured parts. ECHO 6 axis portable arm CMM models are available with measurement ranges of 1.8m, 2,5m, 3,2m and 4.0m and with a single point accuracy down to 0.023mm.

ECHO is the latest generation of light-weight portable measuring arm CMM and resulting from more than 25 years of experience in the development and production of portable measurement arm solutions. Each arm is manufactured from carbon fibre providing a durable light-weight and stable measuring solution.



Enhanced Accuracy ECHO PLUS Laser Scanning Range

The ECHO PLUS offers enhanced accuracy for the more demanding measurement applications.

The ECHO PLUS arm is available to be used in combination touch measurement and with the Perceptron ScanR Laser Scanner for point cloud inspection or reverse-engineering and is available in 6 axis or 7 axis configurations.

ECHO PRO Extended Reach

ECHO PRO extends the measuring arm reach of portable arm CMM applications with a measuring range of 5m, 7m and 9m. ECHO PRO is the most unique portable arm CMM available in the global market today due to measuring reach and incredible accuracy performance; perfect for the inspection of large parts where you need portable measurement capability with single point accuracy of 0.050mm.

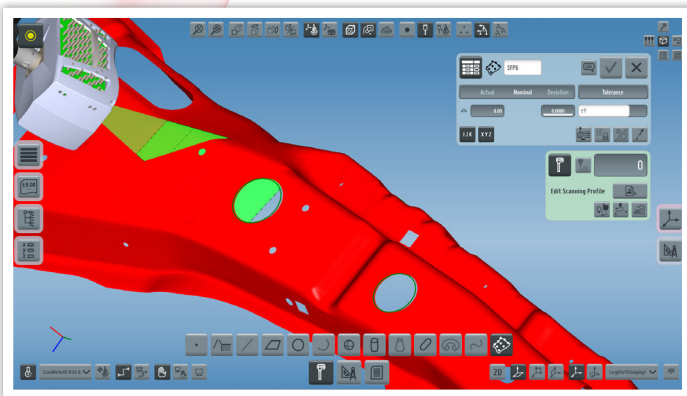
ECHO Portable Articulated Arm CMM

ECHO ARM

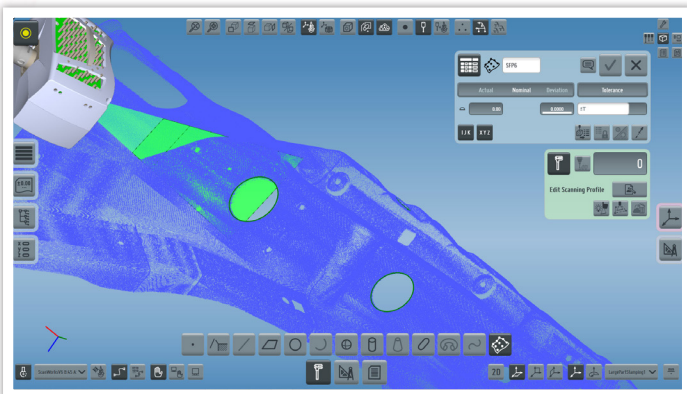
Metrology to Go...

Simple One Touch Measurement Software

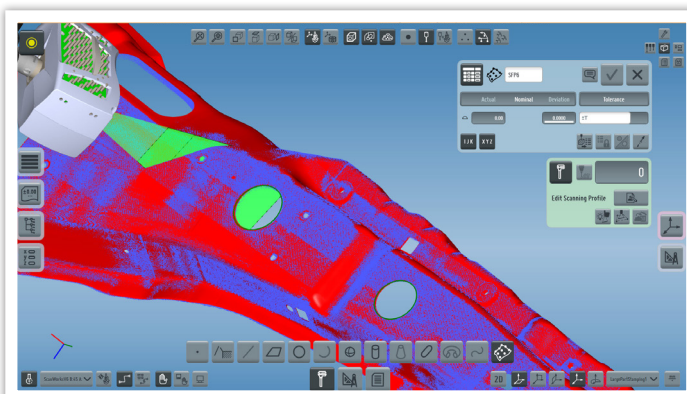
The ECHO portable arm series comes standard with TouchDMIS measuring software offering full metrology performance at a Single Touch; inbuilt intellect allows inspection of repetitive features without any software interaction offering "Touchless" inspection. Check it out...



CAD Import



Point Cloud



CAD to Cloud Compare

TouchDMIS
One Touch Measurement

Standard Pistol Grip provides for ergonomic and comfortable operation

The 7 axis ECHO arm comes standard with the ergonomically designed "pistol grip" with integrated buttons and allows for comfortable and ergonomic arm measurements to be performed with the dynamically counterbalanced arm. The Grip includes a quick-release stylus holder for rapid styli changes to suite individual measurement tasks.



Floating Probe

Floating Probe Head provides more Accurate Measurement

The optional Floating Probe Head allows the user to "trigger measurement" points by simply applying pressure to the holder. This unique device allows for more accurate measurements than traditionally available with portable arms when using hard probes and provides a trigger measurement without the need for an expensive touch-trigger probe.

Counter Balance & Electronic Brake

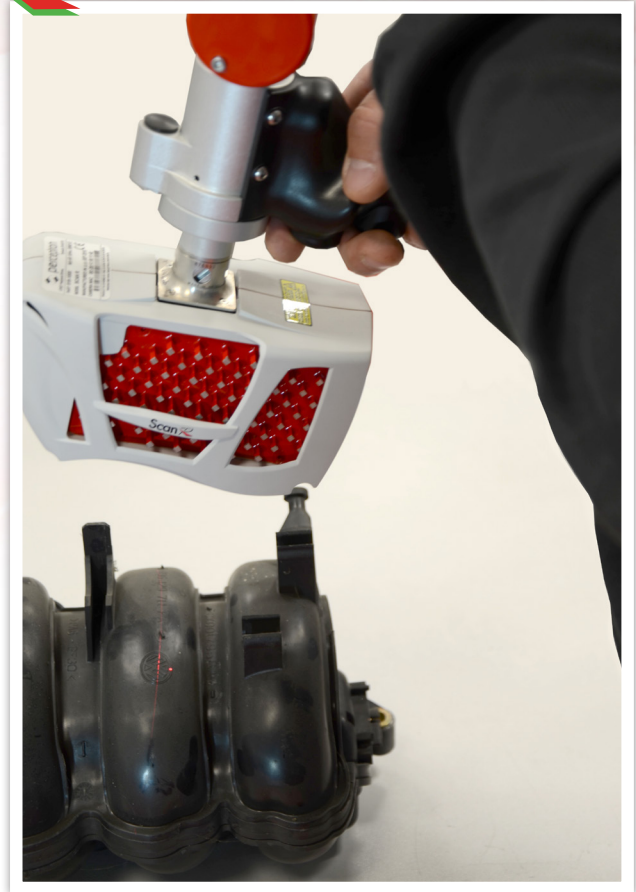
Double spring counter-balance provides light-weight operation; an electromagnetic brake prevents the user from accidental dropping and damaging the ECHO arm.

High Performance Scanning



Features & Benefits

- Rigid carbon fibre arm platform provides maximum stiffness
- Standard and enhanced accuracy PLUS models
- 6 or 7 axis arms
- Extended reach PRO arms offer up to 9000mm measuring range
- Double spring counter-balance provides lightweight operation
- Electromagnetic safety brake prevents damage from dropping
- Pistol Grip with fully integrated "trigger" buttons
- Floating Probe Head provides enhanced accuracy measurement
- High precision quick probe changer
- Automatic probe type and ball size recognition
- High resolution encoders
- Automatic temperature compensation system
- USB driver kit, power supply and USB cable
- Lithium ION battery pack
- Rugged case for storage & transportation
- IP54 protect



Options

- Heavy Duty Support Stand
- Magnetic Base
- Floating Probe
- Perceptron ScanR Laser Scanner

Model & Sizes

	ECHO (6)	PRO (6)	PLUS (6)	PLUS (7)
1800	X		X	X
2500	X		X	X
3200	X		X	X
4000	X		X	X
5000		X		
7000		X		
9000		X		

(6) Denotes 6-Axis Arm
(7) Denotes 7-Axis Arm



About Perceptron:

Perceptron (NASDAQ: PRCP) supplies a comprehensive range of automated industrial metrology products and solutions to manufacturing organizations for dimensional gauging, dimensional inspection and 3D scanning. Products include 3D machine vision solutions, robot guidance systems, coordinate measuring machines, laser scanners and advanced analysis software. Globally, automotive, aerospace and other manufacturing companies rely on Perceptron's metrology solutions to assist in managing their complex manufacturing processes to improve quality, shorten product launch times and reduce costs. More than 900 systems, 12,000 Perceptron measuring sensors and over 3,000 COORD3 coordinate measuring machines are in active daily use worldwide. Headquartered in Plymouth, Michigan, USA, Perceptron operates worldwide with subsidiary operations in Brazil, China, Czech Republic, France, Germany, India, Italy, Japan, Singapore, Slovakia, Spain, and the UK.

Your
Metrology
is our
Focus

Perceptron North America

Perceptron, Inc.
47827 Halyard Drive
Plymouth, MI 48170
U.S.A.
Tel: +1 734 414 6100
info@perceptron.com

Perceptron Italy

COORD3 - Perceptron Italia Srl
Strada Statale 25, n°3
10050 Bruzolo (TO) - Italy
Tel: +39 011 9635511
italy@perceptron.com

Perceptron Singapore

Perceptron Asia Pte. Ltd.
18 Boon Lay Way
#10-143 TradeHub 21
Singapore 609966
Tel: +65 6795 5280
singapore@perceptron.com

Perceptron EMEA

(Europe, Middle East, Africa)
Perceptron GmbH
Stahlgruberring 7
D-81829 München
Germany
Tel: +49 89 960 980
emea@perceptron.com

Perceptron China

Perceptron Trading (Shanghai) Co., Ltd.
Room 1005, Building 22
No. 368 Zhangjiang Road
Pudong New District
Shanghai, 201203 China
Tel: +86 21 3393 2262
china@perceptron.com

Perceptron India

Perceptron Non-Contact
Metrology Solutions Pvt. Ltd.
12/2, McNichols Road
Chetpet, Chennai 600 031
India
Tel +91 44 4284 9610
india@perceptron.com

Perceptron United Kingdom

Perceptron Metrology UK Ltd.
Fort Dunlop, Fort Parkway
Birmingham B24 9FE, UK
Tel: +44 121 6297794
uk@perceptron.com

Perceptron South America

Perceptron do Brasil Ltda.
Rua Helena 218, Suite 205
Vila Olimpia
São Paulo, Brazil 04552-050
Tel: +55 11 3044 1950
brazil@perceptron.com

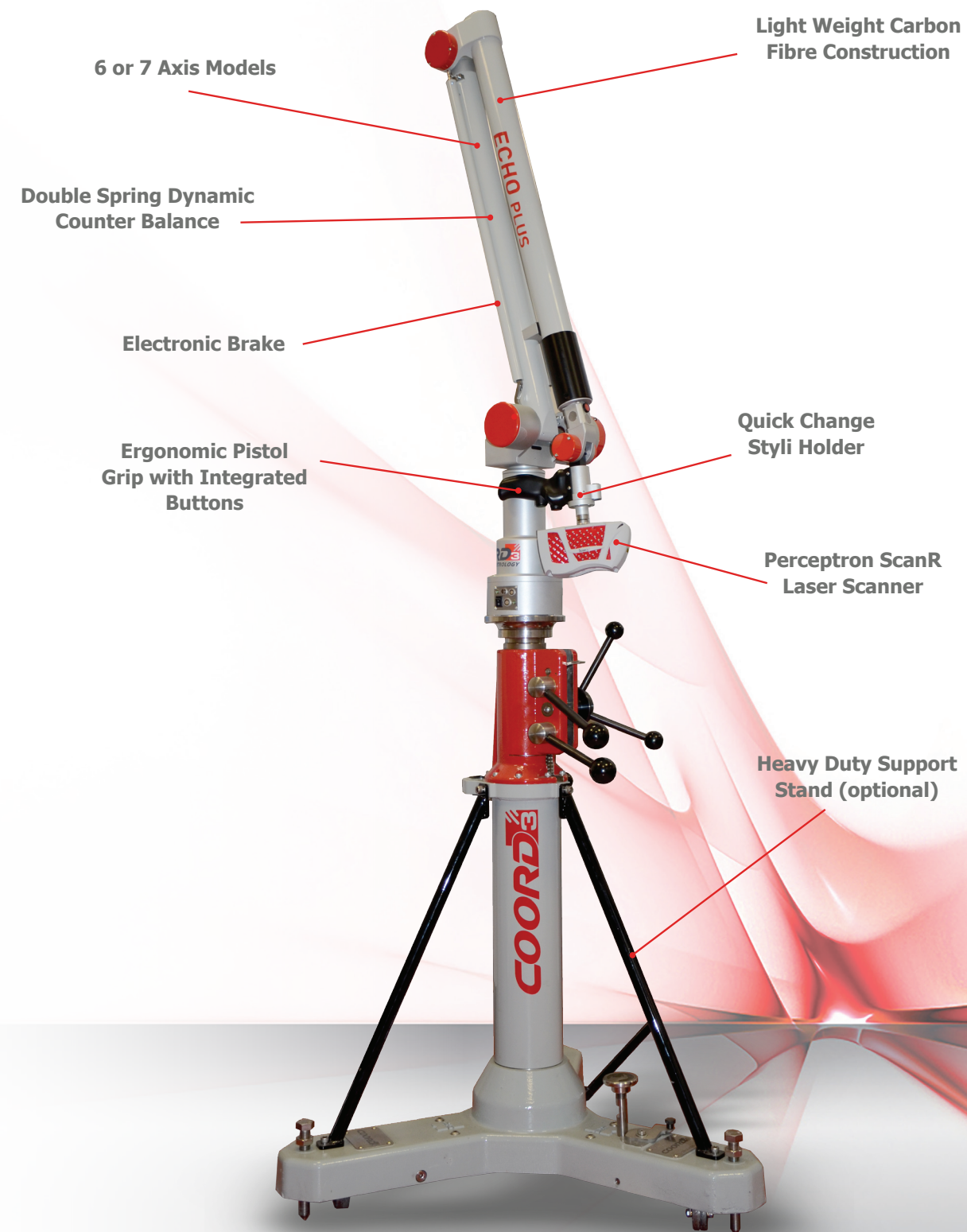
Perceptron Japan

Perceptron Asia Pacific, Ltd.
Shinbashi Annex 1F, 5-35-10
Shinbashi, Minato-ku
Tokyo 105-0004, Japan
Tel: +81 3 5425 1080
japan@perceptron.com

Visit our web site
www.perceptron.com

COORD3

ECHO ARM



COORD3

About Perceptron:

Perceptron (NASDAQ: PRCP) supplies a comprehensive range of automated industrial metrology products and solutions to manufacturing organizations for dimensional gauging, dimensional inspection and 3D scanning. Products include 3D machine vision solutions, robot guidance systems, coordinate measuring machines, laser scanners and advanced analysis software. Globally, automotive, aerospace and other manufacturing companies rely on Perceptron's metrology solutions to assist in managing their complex manufacturing processes to improve quality, shorten product launch times and reduce costs. More than 900 systems, 12,000 Perceptron measuring sensors and over 3,000 COORD3 coordinate measuring machines are in active daily use worldwide. Headquartered in Plymouth, Michigan, USA, Perceptron operates worldwide with subsidiary operations in Brazil, China, Czech Republic, France, Germany, India, Italy, Japan, Singapore, Slovakia, Spain, and the UK.

Your
Metrology
is our
Focus

Perceptron North America

Perceptron, Inc.
47827 Halyard Drive
Plymouth, MI 48170
U.S.A.
Tel: +1 734 414 6100
info@perceptron.com

Perceptron Italy

COORD3 - Perceptron Italia Srl
Strada Statale 25, n°3
10050 Bruzolo (TO) - Italy
Tel: +39 011 9635511
italy@perceptron.com

Perceptron Singapore

Perceptron Asia Pte. Ltd.
18 Boon Lay Way
#10-143 TradeHub 21
Singapore 609966
Tel: +65 6795 5280
singapore@perceptron.com

Perceptron EMEA

(Europe, Middle East, Africa)
Perceptron GmbH
Stahlgruberring 7
D-81829 München
Germany
Tel: +49 89 960 980
emea@perceptron.com

Perceptron China

Perceptron Trading (Shanghai) Co., Ltd.
Room 1005, Building 22
No. 368 Zhangjiang Road
Pudong New District
Shanghai, 201203 China
Tel: +86 21 3393 2262
china@perceptron.com

Perceptron India

Perceptron Non-Contact
Metrology Solutions Pvt. Ltd.
12/2, McNichols Road
Chetpet, Chennai 600 031
India
Tel: +91 44 4284 9610
india@perceptron.com

Perceptron United Kingdom

Perceptron Metrology UK Ltd.
Fort Dunlop, Fort Parkway
Birmingham B24 9FE, UK
Tel: +44 121 6297794
uk@perceptron.com

Perceptron South America

Perceptron do Brasil Ltda.
Rua Helena 218, Suite 205
Vila Olimpia
São Paulo, Brazil 04552-050
Tel: +55 11 3044 1950
brazil@perceptron.com

Perceptron Japan

Perceptron Asia Pacific, Ltd.
Shinbashi Annex 1F, 5-35-10
Shinbashi, Minato-ku
Tokyo 105-0004, Japan
Tel: +81 3 5425 1080
japan@perceptron.com

Visit our web site
www.perceptron.com

ECHO Portable Arm CMM



ECHO Portable Articulated Arm CMM

Metrology to Go...

COORD3 ECHO Portable Articulated Arm CMM is ideal for quick and accurate inspection of manufactured parts. ECHO 6 axis portable arm CMM models are available with measurement ranges of 1.8m, 2.5m, 3.2m and 4.0m and with a single point accuracy down to 0.023mm.

ECHO is the latest generation of light-weight portable measuring arm CMM and resulting from more than 25 years of experience in the development and production of portable measurement arm solutions. Each arm is manufactured from carbon fibre providing a durable light-weight and stable measuring solution.



Enhanced Accuracy ECHO PLUS Laser Scanning Range

The ECHO PLUS offers enhanced accuracy for the more demanding measurement applications.

The ECHO PLUS arm is available to be used in combination touch measurement and with the Perceptron ScanR Laser Scanner for point cloud inspection or reverse-engineering and is available in 6 axis or 7 axis configurations.

ECHO PRO Extended Reach

ECHO PRO extends the measuring arm reach of portable arm CMM applications with a measuring range of 5m, 7m and 9m. ECHO PRO is the most unique portable arm CMM available in the global market today due to measuring reach and incredible accuracy performance; perfect for the inspection of large parts where you need portable measurement capability with single point accuracy of 0.050mm.

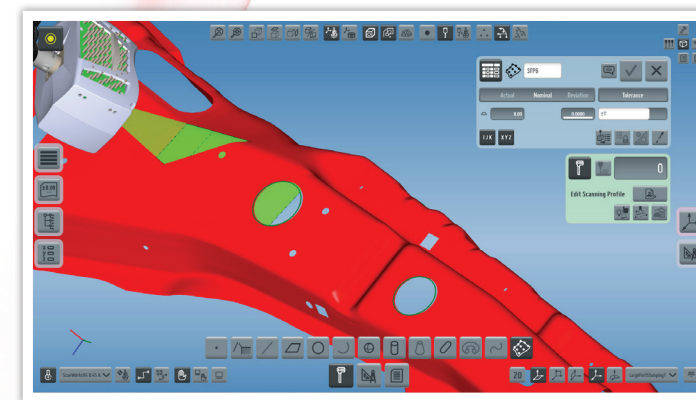


ECHO ARM

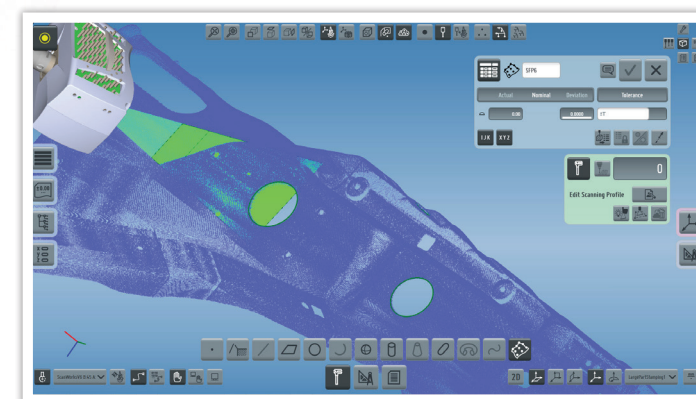
Metrology to Go...

Simple One Touch Measurement Software

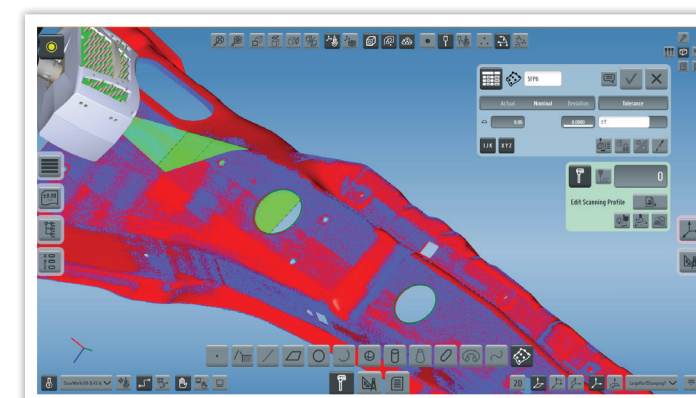
The ECHO portable arm series comes standard with TouchDMIS measuring software offering full metrology performance at a Single Touch; inbuilt intellect allows inspection of repetitive features without any software interaction offering "Touchless" inspection. Check it out...



CAD Import



Point Cloud



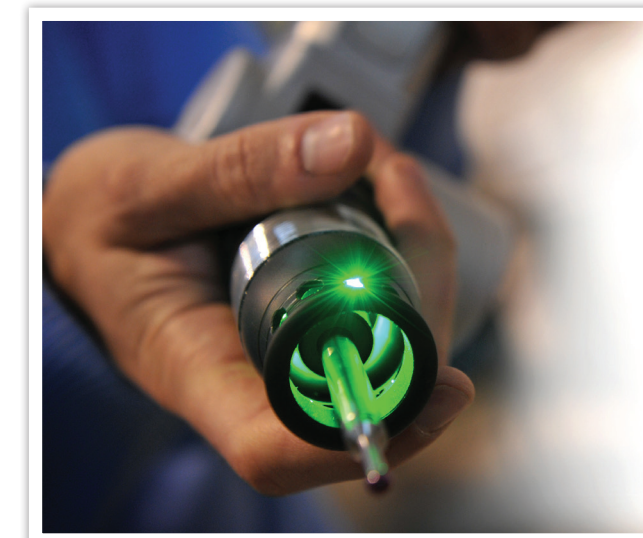
CAD to Cloud Compare

TouchDMIS

One Touch Measurement

Standard Pistol Grip provides for ergonomic and comfortable operation

The 7 axis ECHO arm comes standard with the ergonomically designed "pistol grip" with integrated buttons and allows for comfortable and ergonomic arm measurements to be performed with the dynamically counterbalanced arm. The Grip includes a quick-release stylus holder for rapid styli changes to suite individual measurement tasks.



Floating Probe

Floating Probe Head provides more Accurate Measurement

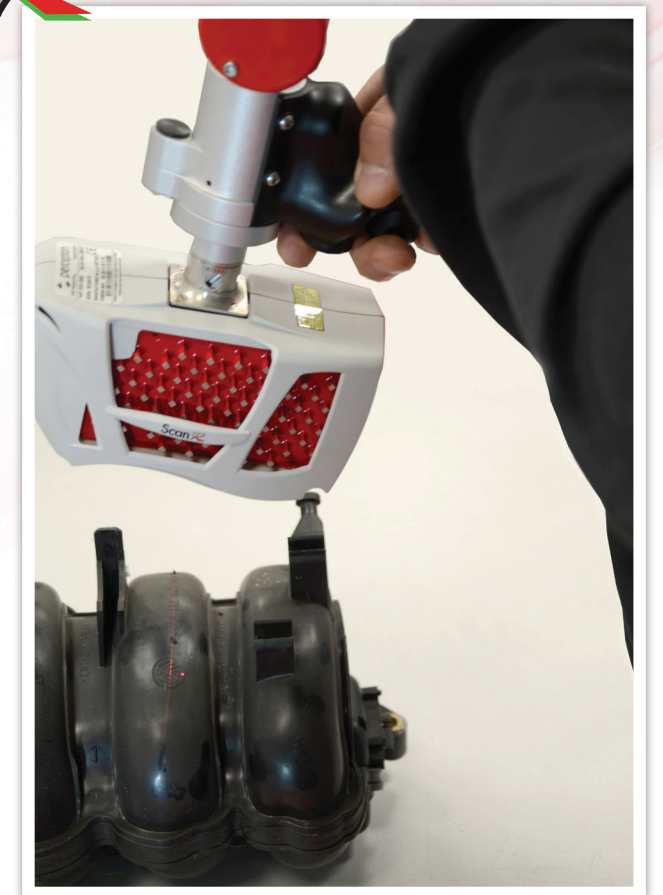
The optional Floating Probe Head allows the user to "trigger measurement" points by simply applying pressure to the holder. This unique device allows for more accurate measurements than traditionally available with portable arms when using hard probes and provides a trigger measurement without the need for an expensive touch-trigger probe.

Counter Balance & Electronic Brake

Double spring counter-balance provides light-weight operation; an electromagnetic brake prevents the user from accidental dropping and damaging the ECHO arm.

Features & Benefits

- Rigid carbon fibre arm platform provides maximum stiffness
- Standard and enhanced accuracy PLUS models
- 6 or 7 axis arms
- Extended reach PRO arms offer up to 9000mm measuring range
- Double spring counter-balance provides lightweight operation
- Electromagnetic safety brake prevents damage from dropping
- Pistol Grip with fully integrated "trigger" buttons
- Floating Probe Head provides enhanced accuracy measurement
- High precision quick probe changer
- Automatic probe type and ball size recognition
- High resolution encoders
- Automatic temperature compensation system
- USB driver kit, power supply and USB cable
- Lithium ION battery pack
- Rugged case for storage & transportation
- IP54 protect



Options

- Heavy Duty Support Stand
- Magnetic Base
- Floating Probe
- Perceptron ScanR Laser Scanner

Model & Sizes

	ECHO (6)	PRO (6)	PLUS (6)	PLUS (7)
1800	X		X	X
2500	X		X	X
3200	X		X	X
4000	X		X	X
5000		X		
7000		X		
9000		X		

(6) Denotes 6-Axis Arm
(7) Denotes 7-Axis Arm

